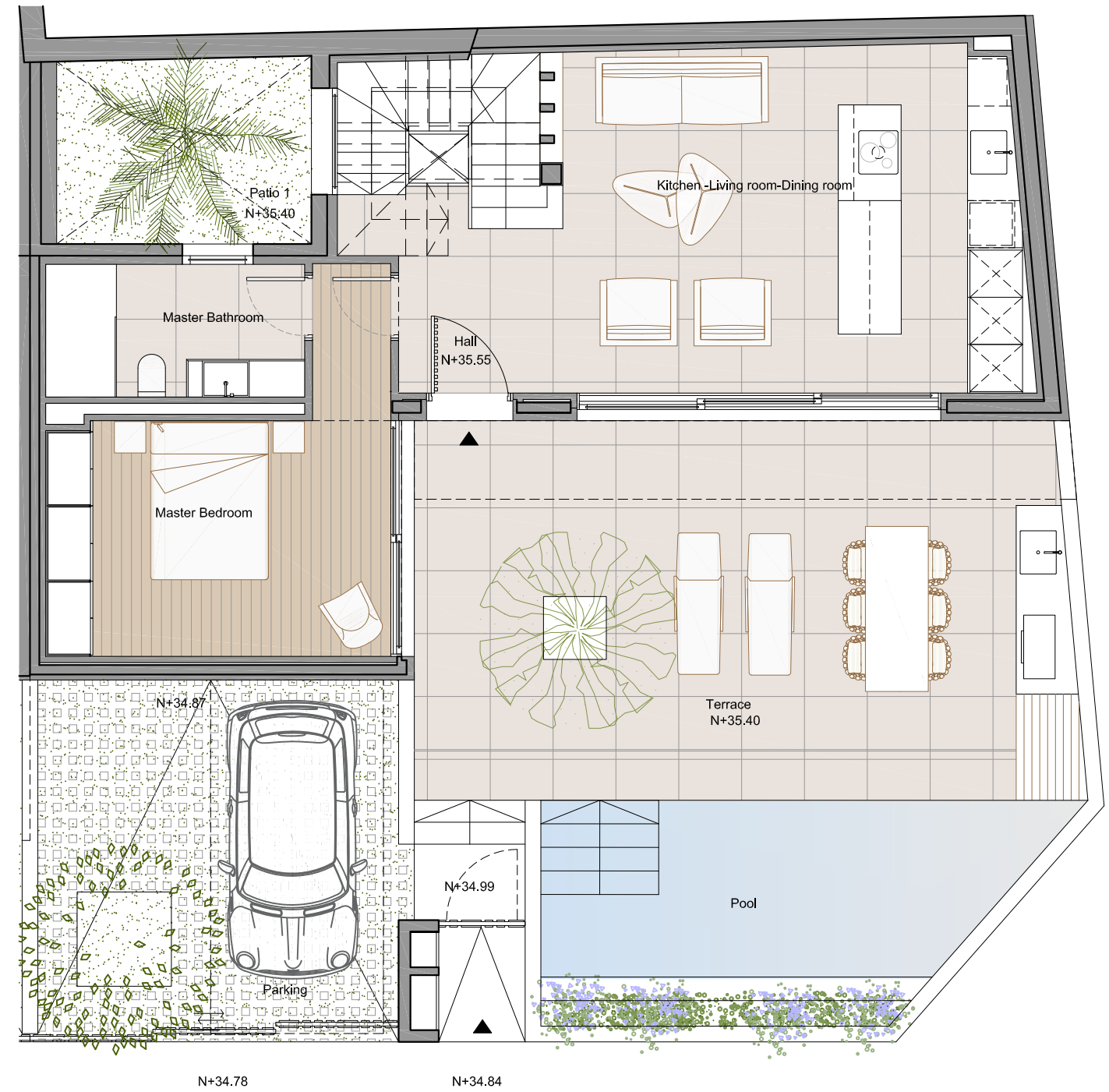




BASEMENT

BUILT AREA Property A (54)

BASEMENT	71.80 m ²
GROUND FLOOR	69.07 m ²
FIRST FLOOR	44.35 m ²
TOTAL BUILT AREA	185.22 m²
PARKING UNCOVER	21.61 m ²
PATIO 1	9.51 m ²
PATIO 2	7.34 m ²
TERRACE & GARDEN	37.6 m ²
POOL	13.56 m ²



N+34.78

N+34.84